

Prescription and instructions for radiographing both knees

Stephen M. Howell, M.D.
8120 Timberlake Way Suite 112,
Sacramento CA 95823
Office: 916.689.7370
Fax: 916.688.5610

Advanced Imaging Center

1031 S. Fairmont Avenue
Lodi, Ca 95240
T: 209.333.8343

Sutter Imaging Roseville Parkway

1640 E. Roseville Parkway Suite 100
Roseville, Ca 95661
T: 916.784.2277 F: 916.784.2670

Sutter Imaging Fort Sutter

2801 K Street Suite 110
Sacramento, Ca 95816
T: 916.733.5051 F: 916.733.8753

Sutter Imaging Davis

2020 Sutter Place
Davis, Ca 95616
T: 530.747.5030 F: 530.747.5031

Sutter Imaging Auburn Faith

11815 Education Street
Auburn, Ca 95602
T: 530.888.4535 F: 530.887.8255

Sutter Imaging Vacaville

770 Mason Street
Vacaville, Ca 95688
T: 707.427.4900 F: 707.454.5922

Sutter Imaging Lincoln

685 Twelve Bridges Drive Suite A
Lincoln, Ca 95648
T: 916.408.5448 F: 916.408.5454

Sutter Imaging Folsom I

1655 Creekside Drive
Folsom, Ca 95630
T: 916.984.0739 F: 916.784.2670

Sutter Imaging Carmichael

6620 Coyle Avenue Suite 100
Carmichael, Ca 95608
T: 916.961.4910 F: 916.784.2670

Sutter Imaging Alhambra

1201 Alhambra Blvd. Suite 140
Sacramento, Ca 95816
T: 916.731.7782 F: 916.731.7781

Sutter Imaging Folsom II

1661 Creekside Drive
Folsom, Ca 95630
T: 916.984.0739 F: 784.2670

Sutter Imaging Greenback

5767 Greenback Lane
Sacramento, Ca 95841
T: 916.865.1079 F: 916.865.1085

Sutter Imaging Elk Grove

8170 Laguna Blvd. Suite 112
Elk Grove, Ca 95758
T: 916.691.5922 F: 916.865.1491

Sutter Imaging Sacramento

3161 L Street
Sacramento, Ca 95816
T: 916.453.9999 F: 916.784.2670

Sutter Imaging Vallejo

100 Hospital Drive
Vallejo, Ca 94589
T: 707.427.4900 F: 707.551.3612

Sutter Imaging Rancho Cordova

11121 Sun Center Drive Suite A
Rancho Cordova, Ca 95670
T: 916.861.8304 F: 916.862.7910

Sutter Imaging Campus Commons

2 Scripps Drive Suite 110
Sacramento, Ca 95825
T: 916.929.3393 F: 916.784.2670

Sutter Imaging Woodland

475 Pioneer Ave, Suite 100
Woodland, Ca 95776
T: 530.406.5616 F: 530.406.5618

Sutter Imaging Amador

100 Mission Blvd
Jackson, Ca 95642
T: 209.223.7560 F: 209.223.7548

Sutter Imaging South

8118 Timberlake Way Suit 110
Sacramento, Ca 95823
T: 916.681.8852 F: 916.784.2670

Sutter Imaging Yuba City

440 Plumas Blvd
Yuba City, Ca 95991
T: 530.749.3301 F: 530.749.3496

Sutter Imaging Fairfield

2700 Low Court
Fairfield, Ca 94534
T: 707.432.2500 F: 707.432.2599

Sutter Imaging Capital Pavilion

2725 Capital Ave Suite 104/106
Sacramento, Ca 95816
T: 916.262.9522 F: 916.865.1491

Sutter Imaging 29th Street

1020 29th Street, Suite 120
Sacramento, Ca 95816
T: 916.453.999 F: 916.784.2670

Patient Name: _____ DOB: _____

Home Phone #: _____ Cell Phone #: _____

Insurance Carrier / Medical Group: _____ ID #: _____

Exam Requested: : FOUR VIEWS OF BOTH KNEES - See Description Next Page

Diagnosis: DJD BILATERAL KNEE/KNEE PAIN ICD-10: M17.9

Provider Name: STEPHEN M. HOWELL, M.D. Provider's Signature: _____

Please copy all images to CD.

Remind patient to hand carry CD to Dr. Howell

Make appointment or walk in at facilities listed above or a local one to obtain knee radiographs

Obtain these four Radiographs of both knees

1. Weight-Bearing full extension A/P view of both knees
2. Weight-Bearing 45° flexed P/A view of both knees (see figure)
3. Lateral views of both knees
4. Sunrise views of both knees

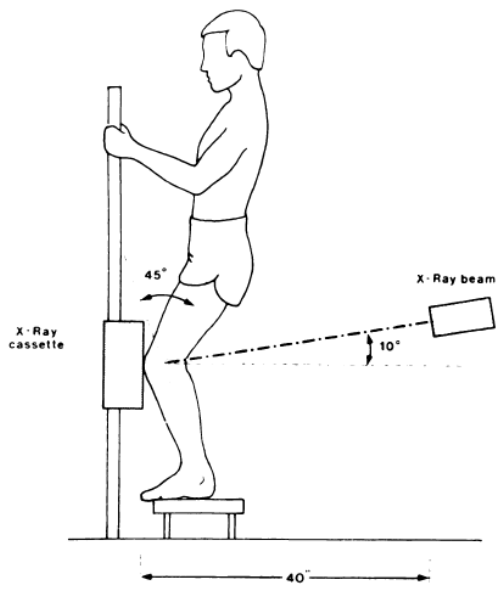
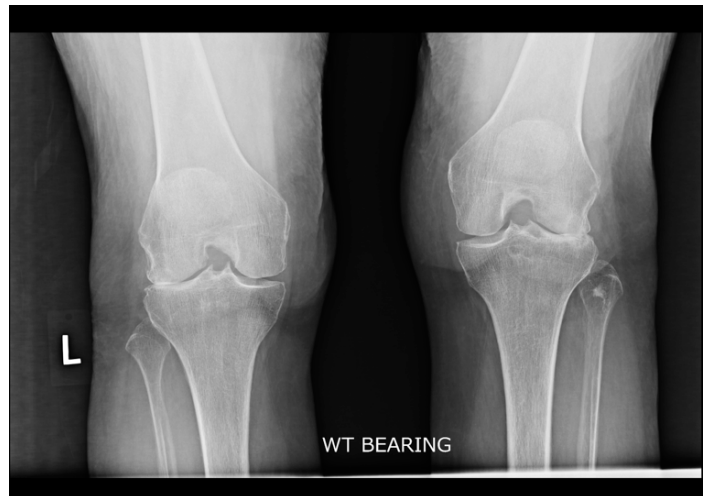


FIG. 1

Technique for making the 45-degree posteroanterior flexion weight-bearing radiograph. Note that the x-ray machine is forty inches (101.6 centimeters) from the cassette.



An acceptable weight-bearing 45° flexed P/A view of both knees clearly shows the joint line of the knee, which requires superimposition of the anterior and posterior joint lines.

